

**Welcome to the Worship Celebration of**



**SIMPLY BIBLICAL | FAMILY INTEGRATED**

# Church – The Beginnings, Part 19

## Simply Biblical Church Leadership – part 4

### Acts 6:1-7 – Leadership Model → Span of Care



# 1. Leadership Model (O.T. / N.T.)

[ref. Ephesians 4:11-16; Numbers 11:11-30; Exodus 18:13-26]

→ to Lead God's People in God's System of Care and  
the Equipping Process

The Leaders also Shepherd and Protect God's flock (Acts 20:28-31)  
[ Example: mama bear with her cubs ]

( <https://NLFJI.org/LM> )

## 2. God's System of Care and His Equipping Process within the Body of Christ

Goal → Christ's Disciples are Cared for, Nurtured, and Equipped

The Leadership Model (The Jethro Principle) of Leaders of

1000's, 100's, 50's, and 10's

is the basis for this Fabric of Care – it is based on the FACTOR of FIVE

Each hand has 5 fingers to Grip, to Lift, to Hold, to Give, etc.

Research shows that close Friendships rarely go beyond 5 people.

It gets harder to be that close beyond 5, although some folks can.

Notice how much time Jesus spent with Peter, James and John (3 people)

→ Definition of SPAN of Care – *Each disciple of Jesus Christ needs to receive care and love within his/her local church family. And, each disciple of Jesus Christ needs to care for others within his/her local church family. Although, each disciple needs to care for others, he/she should NOT care for too many*

ref: Exodus 18:13-30, Matt. 11:28-30; Gal. 6:1-5; 1 Peter 2:9

( <https://NLFJI.org/LM> )

### **3. LIFE GROUPS – Servant Leaders leading Christ's Servants**

**Exodus 18:13-26 → Leaders of 1000's, 100's, 50's, & 10's**

**Using the Jethro Principle / Model of Leadership –**

**The Fabric of Pastoral Care Extension:**

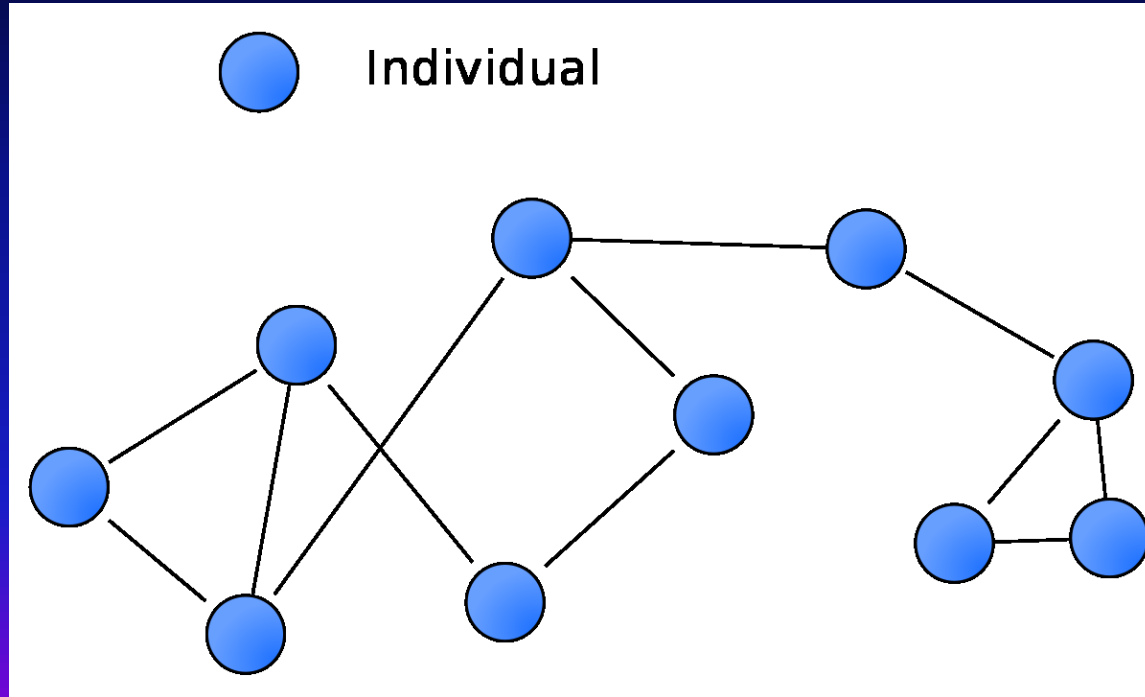
**We have a Model in which everyone, including the LIFE Group Leaders, are CARED for.**

**Caring includes Equipping, Training, Growing in Christ**

- a. We start with the Individual Christian – Saved / Born Again**
- b. each Christian needs godly fellowship within the Body of Christ**
- c. each Christian needs to serve others within the context of relationships in Christ**
- d. each LIFE Group Leader needs Care – within God's System of Leadership Care**

**( <https://NLFJI.org/LM> )**

**We start with the Individual Christian who needs care, fellowship and equipping – he/she needs to be CONNECTED to a local church family**  
**Connect with Relationships, a LIFE Group and Worship Celebrations**



( <https://NLFJI.org/LM> )

**We start with the Individual Christian who needs care, fellowship and equipping – he/she needs to be CONNECTED to a LIFE Group**

**A LIFE Group Leader is a Leader of 10's**

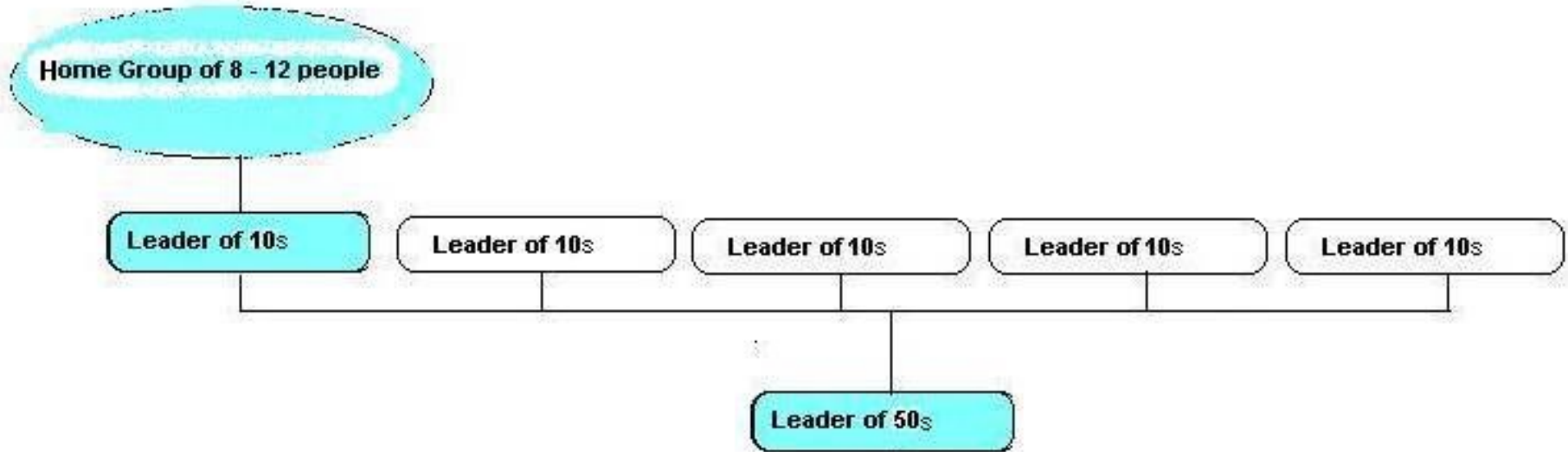


**( <https://NLFJI.org/LM> )**

**Each LIFE Group Leader (husband and wife – ideally – deacons) needs to be cared for, nurtured and encouraged.**

**A LIFE Group Leader is a Leader of 10's**

**A LIFE Group Coach is a Leader of 50's → FACTOR of 5**



( <https://NLFJI.org/LM> )

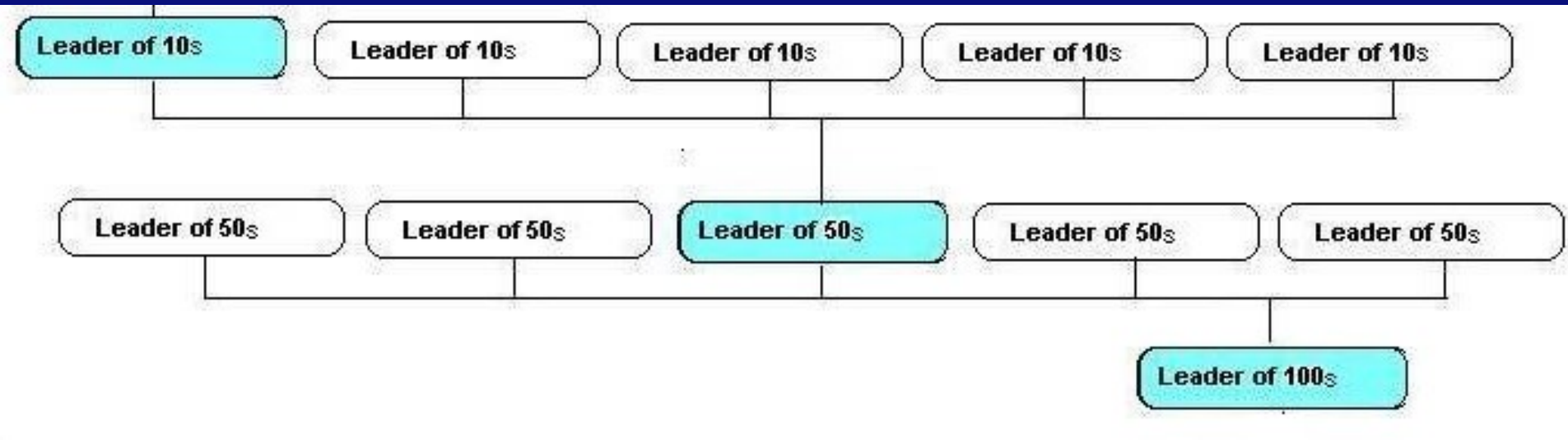


**Each LIFE Group Leader (husband and wife – ideally – deacons) needs to be cared for, nurtured and encouraged.**

**A LIFE Group Leader is a Leader of 10's**

**A LIFE Group Coach is a Leader of 50's → FACTOR of 5**

**A Coach Leader is a Leader of 100's → FACTOR of 5**



( <https://NLFJI.org/LM> )

**Each LIFE Group Leader (husband and wife – ideally – deacons) needs to be cared for, nurtured and encouraged.**

**A LIFE Group Leader is a Leader of 10's**

**A LIFE Group Coach is a Leader of 50's → FACTOR of 5**

**A Coach Leader is a Leader of 100's → FACTOR of 5**

**A LIFE Leader Captain is a Leader of 1000's → FACTOR of 5**

**\*\*\* Exodus 18:13-30**

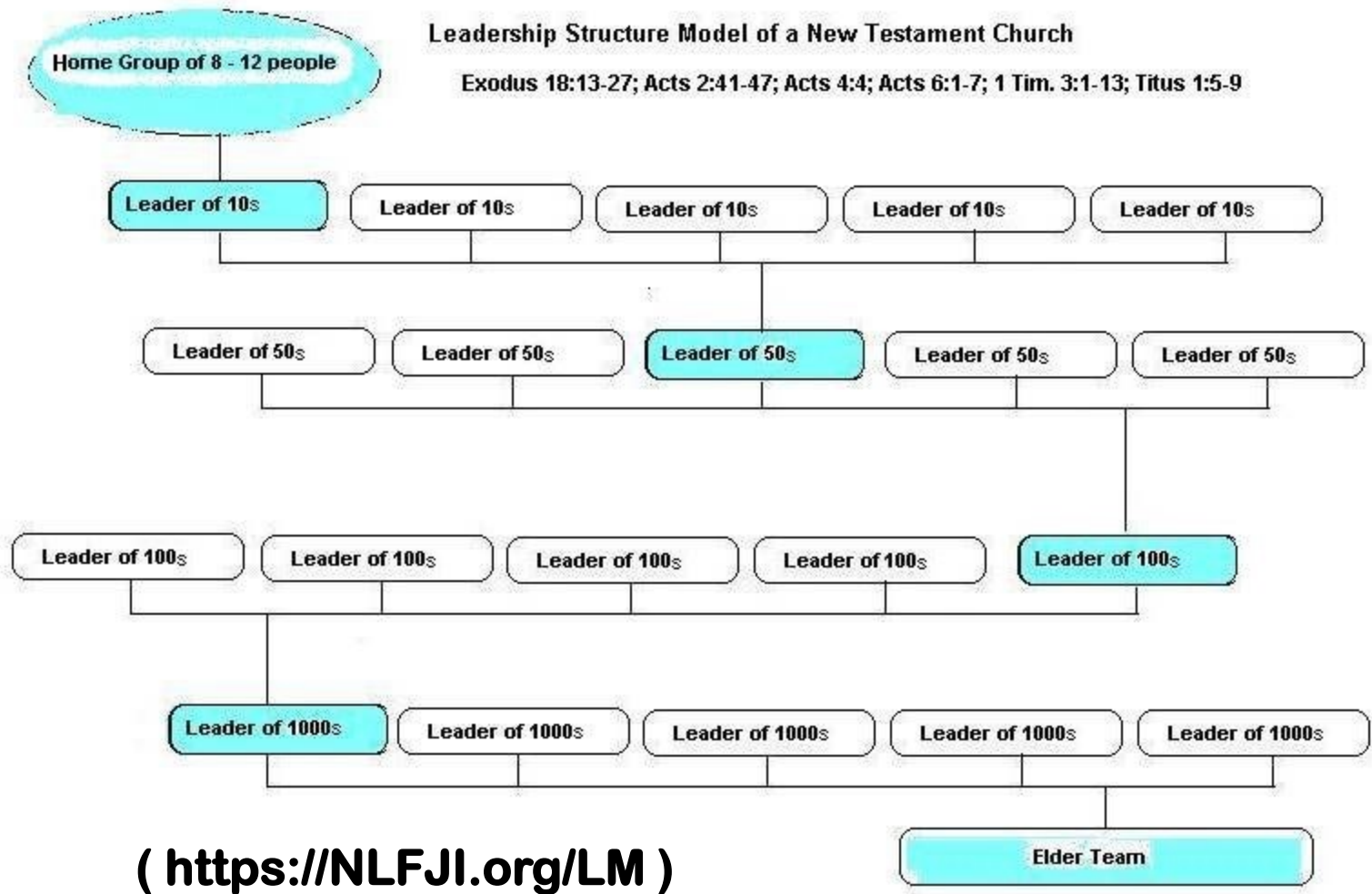
**Leaders of 1000's, 100's, 50's and 10's ( <https://NLFJI.org/LM> )**



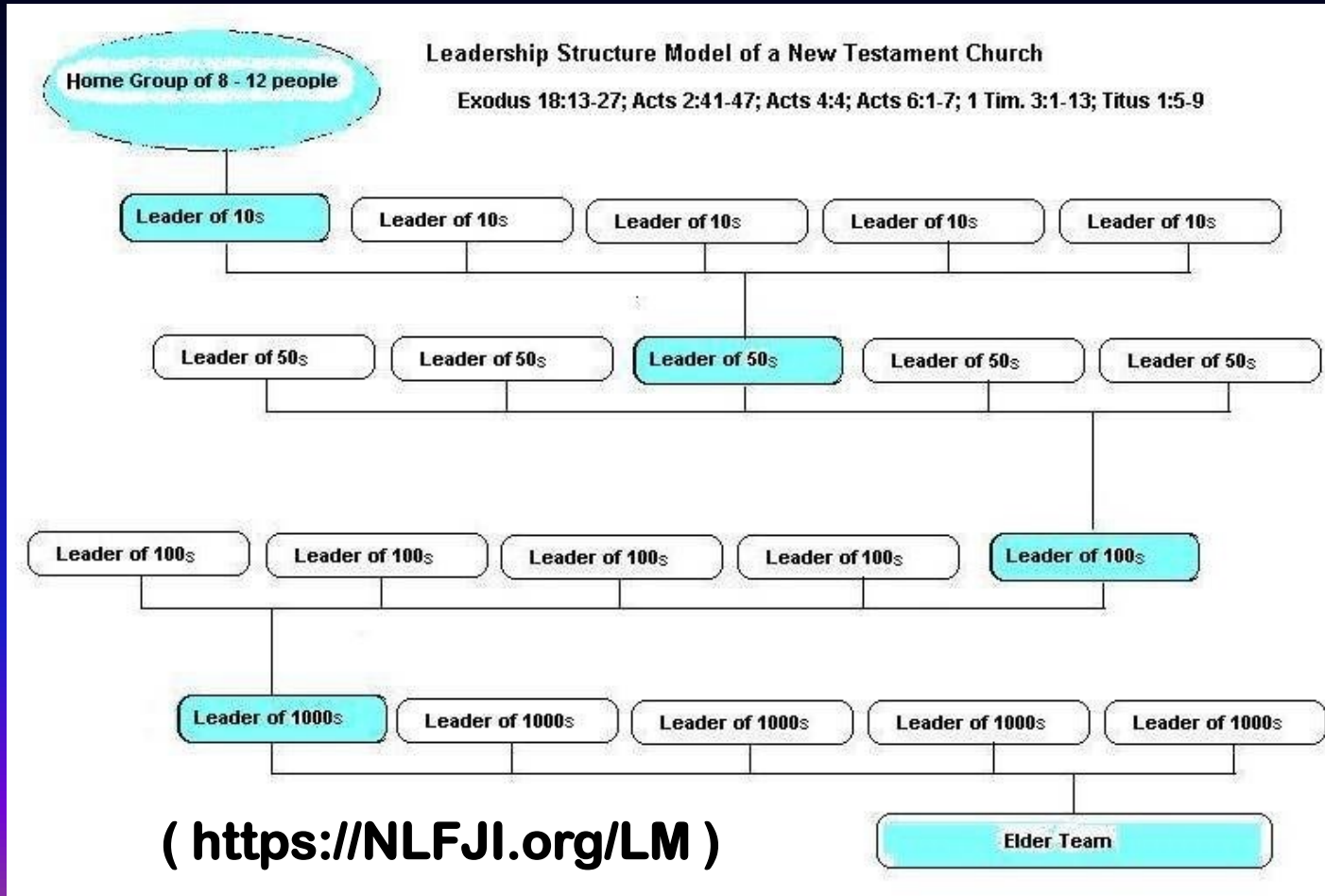
**( <https://NLFJI.org/LM> )**

**Each LIFE Group Leader has care: 10's to 50's ... then ... 50's to 100's ... then ... 100's to 1000's ... then ... Elder Team Oversees it all**

**Exodus 18 Numbers 11**



# God's Leadership Shepherding Care System → Everyone are Cared for



**Let's Worship God ... Because of Who He is,  
For What He has done, and What He is Yet  
to do → He is the GREAT GOD, ALMIGHTY  
WHO HAS ALL CONTROL OVER THE  
WHOLE UNIVERSE and TIME...**

**ALL POWERFUL ALMIGHTY GOD  
The GOD of ISRAEL**

